



# 2024

# READY 2 WORK

Connecting Students to Sustainable Careers



BRIDGE BUILDERS  
LEADERSHIP INITIATIVE

[BBLI.ORG](http://BBLI.ORG)

In  
Partnership  
With



PEARL HIGH SCHOOL





# WHO'S HERE

- Bridge Builders Leadership Initiative
- Byrd & Cook
- Byrd On The Roof
- Castle
- Centerpoint Energy
- Central MS Planning & Development District
- Community Bank
- Continental Tire
- Craft Croswell
- CRW Truck Driving Training School
- CSI Batteries
- Electrolux Professional Group/ Unified Brands
- Empire Trucks
- Ergon / Magnolia Marine Transport



Pearl High School

In  
Partnership  
With



Bridge Builders  
Leadership Initiative



# WHO'S HERE

- Ergon Construction Group
- ISO / Alliant Construction
- Ergon Marine and Industrial Supply
- Independent Roofing Systems
- Irby Construction Company
- MCEF
- MDOT
- Nucor Steel
- PCA
- Pearl Fire Department
- Revell Ace Hardware
- Station Serv
- Sunbelt Sealing
- TempStaff
- United Assoc. of Plumbers and Pipefitters
- United Way



Pearl High School

In  
Partnership  
With



Bridge Builders  
Leadership Initiative



# BRIDGE BUILDERS LEADERSHIP INITIATIVE

Every family deserves the opportunity to build. Bridge Builders provides students the opportunity to grow & succeed with Tuition-FREE after-school & summer programming.

Now serving over 100 students and their families across both of our afterschool programs, we are doing just that.

We are "Bridging the Gap" in the areas of academics, leadership training, family assistance, fighting food insecurity, and so many more! Our programs run all year long, with hours that are meant to bless our working families!

We now have countless success stories from students, parents, teachers, and volunteers who have all alike been blessed by this organization.

**BBLI.ORG**

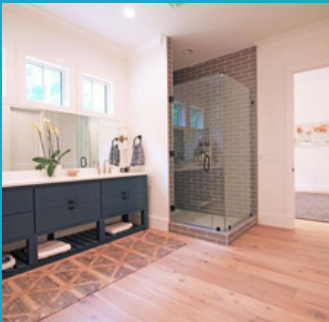
---



**BRIDGE BUILDERS**  
LEADERSHIP INITIATIVE

# **BYRD & COOK** **FLOOR COVERING** **&** **INTERIORS**

Byrd & Cook has been locally owned and operated since 1984. Over the years, our offerings have changed, but our award-winning customer service has not. We currently specialize in all floor-covering ventures for commercial or residential. We also offer design services, window treatments, stone countertops, backsplashes, custom showers, Kemiko concrete stain, among other interior finish work. Byrd & Cook has installers ready to work!



[byrdandcook.com](http://byrdandcook.com)





# BYRD ON THE ROOF

Founded in Mississippi, Byrd on the Roof LLC has grown to become a trusted roofing service provider, proudly serving customers not only in our home state but also extending our expertise to Tennessee, Alabama, Georgia, Louisiana, Kentucky, and Arkansas. We are a restoration roofing contractor that specializes in full roof replacement services.



We take pride in our work and strive to ensure that each roof we work on is of the highest quality. With over a decade of experience in the roofing industry, we are confident that we can provide the most reliable and durable roof that fits customer's needs.

[byrdontheroof.com](http://byrdontheroof.com)



# CASTLE

**A SIMPLE COMPANY, DONE DIFFERENT.**

**CASTLE PIPELINE | CASTLE INTEGRITY GROUP | CASTLE FACILITY GROUP  
CASTLE DIRECTIONAL DRILLING | CASTLE RENEWABLE ENERGY  
CASTLE ENVIRONMENTAL RECLAMATION**



**SKILLED LABORERS  
OPERATORS  
WELDER HELPERS  
MECHANICS  
INTERNSHIPS**



[WWW.WEARECASTLE.COM](http://WWW.WEARECASTLE.COM)



# ***CenterPoint***<sup>®</sup> ***Energy***

CenterPoint Energy, Inc., headquartered in Houston, Texas, is a domestic energy delivery company that includes electric transmission & distribution, natural gas distribution, and energy services operations. With more than 8,900 employees, CenterPoint Energy and its predecessor companies have been in business for more than 140 years.



## **Join Our Team —**

We are always looking for committed professionals who want to grow with us as we develop new ways to serve. CenterPoint Energy is an Equal Opportunity Employer looking to employ and advance in employment qualified minorities, females, people with disabilities, and veterans. View our Equal Opportunity Policy Statement and EEO is the Law for more information.



**[centerpointenergy.com](http://centerpointenergy.com)**





## CENTRAL MISSISSIPPI PLANNING & DEVELOPMENT DISTRICT

The Central Mississippi Planning & Development District has been promoting regional excellence since 1968. Our purpose is to assist with creative regional solutions to relevant and emerging issues for our participating governments



We connect Mississippians to good jobs and employers to the right people. That means creating new pathways to higher wages, higher skills, and higher-demand jobs.

Better training builds better careers. Therefore, we collaborate with employers, community colleges, training centers, and high schools to equip job seekers with in-demand skills. We embrace technology to make training more accessible and meaningful. Our Job Centers and Career Coaches present new possibilities and maintain motivation – because big steps require both direction and courage.

South Central Mississippi Works does much more than fill openings. We build opportunity. That is our work. We are committed to doing it right and doing right by our job seekers, industries, communities, and students.

[cmpdd.org](http://cmpdd.org)



Community Driven Development



State-of-the-art data center



Advocates For The Elderly



# COMMUNITY BANK

Founded over 115 years ago, in the small East-Central Mississippi timber community of Forest, Community Bank puts the highest of value on taking care of our customers – no matter the relationship size, and giving back to the communities we serve.

As Community Bank has grown from one office with 13 staff members and six million in assets when Thomas Colbert, Community Bancshares Senior Chairman Emeritus and visionary leader, was named CEO in 1968, to today, with over 875 staff members, 54 offices, and \$4.6 billion in assets, it is evident that staff is the key to success.

From the early days in Forest until today having locations across four states, Community Bank has hired young, budding talent, brought them into the culture, and taught them how to be true relationship bankers. There is an urgency to take care of the customers and to do it well. “We equip our staff with the ability to help the customers – we foster a culture of building relationships with our customers, no matter the financial need,” said Chuck Nicholson, Chairman of Community Bank.

[communitybank.net](http://communitybank.net)





## Confidence on the road



Continental develops pioneering technologies and services for sustainable and connected mobility of people and their goods. Founded in 1871, the technology company offers safe, efficient, intelligent, and affordable solutions for vehicles, machines, traffic, and transportation.



At Continental, all employees share four fundamental corporate values. They form the roots of our corporate culture: Trust, Passion To Win, Freedom To Act, and For One Another. We are convinced that only in an environment shaped by those values can essential and pioneering services, solutions, and input be created.



[continentaltire.com](https://www.continentaltire.com)



# Craft Crosswell

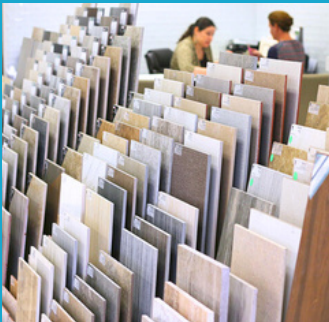
*An Upchurch Company*

## CREATING LASTING IMPRESSIONS WITH EVERY STEP

For over half a century, CraftCrosswell has been one of the largest and most proactive commercial interior firms in the region. The company handles all types of flooring including carpet, resilient, luxury vinyl tile, rubber, wood, and ceramic tile walls and floors. Today, we are active in porcelain tile and natural stone installations. With the mantra, "One Source Many Resources," we endeavor to offer one of the largest assortments of products in the industry.

### Join Our Team

Coupled with our expertise in Project Management, Warehousing, Logistics, and well-trained staff and installation crews, we are truly a One-Stop Shop. We handle all types of projects of all sizes – corporate, healthcare, higher education, K-12, retail, and hospitality to name a few. From a doctor's office reception area to the refurbishment of the New Orleans Superdome after Hurricane Katrina, CraftCrosswell handles it all.



[craftcrosswell.com](http://craftcrosswell.com)

# CRW Truck Driver Training School

## TRAINING SUCCESSFUL DRIVERS ONE MILE AT A TIME

CRW is more than CDL training. CRW is committed to helping our student drivers with continued job placement and finding the best driving job to fit their needs. Every student receives extensive truck driving instruction and maximum truck driving time behind the wheel. The truck driver training program delivers fast, focused results and high-quality truck driving jobs for graduates.

If you are interested in a career as a professional truck driver, or you have trucking industry experience and want to improve or refresh your tractor-trailer driving skills, you have come to the right place -- a truck driver training school where the emphasis is on you!



[crwtruckdrivertraining.com](http://crwtruckdrivertraining.com)



# CSI Batteries

Hi there! We are a family business that has been servicing the battery industry in MS for over 50 years. We supply many businesses across the Southeast with their batteries as a wholesaler, but we also offer retail at our Clinton and Jackson warehouses.



We believe God has put us here to glorify Him and honor our neighbors. We do this in our work by providing the highest quality battery with friendly and knowledgeable service. We're proud to have a team that takes pride in helping customers- we help you understand exactly what you need so that you're not wasting time or money

[www.csibattery.com](http://www.csibattery.com)





# Electrolux Professional Group

Electrolux Professional Group is one of the leading global providers of food service, beverage, and laundry solutions, serving a wide range of customers globally, from restaurants and hotels to healthcare, educational, and other service facilities.



## Join Our Team —

Electrolux Professional welcomes passionate, business-minded team players to join our family. Check out our career site to find out more about various career opportunities.

Opportunities to explore career interests & develop professional skills through real work experience are offered for students and recent graduates across our various sites.

Contact us to discover more.

[electroluxprofessional.com](https://electroluxprofessional.com)



# EMPIRE TRUCK SALES

Empire Truck Sales has been owned and operated by dedicated members of the trucking industry since the beginning. The company was started by Roger Stribling and led by the Swanson and Greener families ever since. Empire Truck Sales is a family-owned business devoted to satisfying the needs of all owner-operators, fleet operations, and trucking industry-related opportunities in the regions of Mississippi, Louisiana, Alabama, and Florida. For any aspect of your commercial transportation business, we are here to serve you.

At Empire, we are always looking for self-starters who enjoy engaging with customers and who are passionate about equipment. Our technicians work to analyze and diagnose engines, transmissions, clutches, brakes, and any other technical components to ensure our customers are getting maximum uptime from their equipment. The goal is to "Keep You Moving" - so if you are interested in joining our team as a technician, check out our featured jobs or view all open positions.



[empiretruck.com](http://empiretruck.com)



# ERGON

UNITED BY SERVICE. DRIVEN BY SOLUTIONS.



Magnolia Marine Transport Company operates the largest inland waterways asphalt transportation fleet in the United States, which consists of 20 towboats and more than 75 barges. MMT moves product throughout the Mississippi River system and intracoastal waterways of the Gulf of Mexico. Magnolia Marine helps to ensure the integrity of crude oil and finished products from the time the oil reaches U.S. shores to the time the finished product is delivered to customers.

## Join Our Team

MMT is a company that values families and builds careers. We provide our employees with the best equipment and training, and set them on a path for success in the marine industry. We foster family bonds both on and off the vessel by hiring only the best crews, and supporting them with a Human Resources Department and staff that value your relationships at home. It's a winning formula that keeps many of our team members at MMT until their retirement — a fact we are very proud of.

Training continues throughout the careers of MMT's mariners and engineers. This ongoing education provides equal opportunities for advancement, and makes for some of the most skilled crews in the entire Marine industry.



[magnoliamarine.com](http://magnoliamarine.com)

# ERGON

UNITED BY SERVICE. DRIVEN BY SOLUTIONS.



**Ergon Construction Group consists of two divisions brought together under the umbrella of one construction-focused organization.**

Our mission is to be the contractor of choice by building it right the first time, every time. To be the employer of choice by building rewarding careers for our skilled craftsmen and the professionals that support them.

## Join Our Team

Alliant is a commercial general contractor offering experience and expertise in design, estimating, building and managing commercial construction projects.

ISO Services is an industrial contractor offering industrial maintenance and specialty services related to insulation for tanks, piping and equipment, steam and electric tracing, blasting, painting, fireproofing and scaffolding.



[alliantconstruction.com](http://alliantconstruction.com)

# Ergon Marine & Industrial Supply, Inc.

**“A strong business, a strong neighbor, a strong resource!”**

Assisting the Port of Vicksburg’s U.S. Coast Guard Maintenance Operations team in human rescue, recovery and property salvage projects, EMIS personnel serve as “first responders” of the river. They help to ensure safety of passengers and recovery of commercial river vessels when navigation goes awry. Over the years, EMIS has developed good working relationships with entities including Vicksburg emergency response teams, and other city and county officials; the U.S. Army Corps of Engineers; U.S. Coast Guard; Department of Homeland Security; and even the FBI.

Ergon Marine & Industrial Supply – Vicksburg employs 61 people and a fleet of seven towboats to provide mid-river fleet servicing 24 hours a day of groceries, fuel, equipment, supplies, crew changes, etc., to commercial vessels navigating the Mississippi River. EMIS is the only mid-stream fueler and harbor service in the industry involved in strategic planning and management calls of the Lower Mississippi River.



[ergon.com](http://ergon.com)





We have quality people, materials, and equipment, meaning we provide a quality roofing job the first time. We provide solid bids to do the work right, no shortcuts, and we are committed to customer satisfaction. Other companies make similar promises when they bid your project, but very few actually live up to them.

## Join Our Team—



We believe in hiring quality people and paying a little more. The best skills in our industry are difficult to come by. Our employees are trained to comply with safety standards and to protect the client's assets during construction. Quality people make fewer mistakes and do a more professional job. In the short run and the long run, it is better for our clients and our company.



[roofing.ms](http://roofing.ms)

# IRBY

## CONSTRUCTION

A  QUANTA SERVICES COMPANY

---

IRBY CONSTRUCTION COMPANY builds power infrastructure on a turnkey basis. As a premier transmission construction company, we have built high-voltage power line projects that span the entire United States—from the Pacific coast to the eastern seaboard. Our work has even taken us to other countries across the globe. Irby also constructs and connects substations and distribution systems. So, our scope of services covers power delivery systems every step of the way—from generation, down the line and into homes and businesses.



Since the beginning, Irby has been known for going the “extra mile” because we build projects covering great distances. However, Irby is not only known for taking on long projects but also for working smart and serving clients beyond expectations.



Absolute Performance stands for success without exception. It’s doing whatever it takes to get the job done as promised. At Irby, performing is doing more than completing the job. It’s going above and beyond. Always.

If you’re looking for a career with an established and growing organization... If you want to work among a tight-knit group of professionals in a place where safety is always first... If you take pride in your work... If you want to build a career with a company known for its expertise and innovation... Then, let’s talk!

[irbyconstruction.com](http://irbyconstruction.com)



## **TRAINING SUCCESSFUL DRIVERS ONE MILE AT A TIME**

MCEF is the designated NCCER training sponsor for Mississippi and provides workforce training and credentialing as the state's Accredited Training Sponsor for the National Center for Construction Education and Research (NCCER). With programs in high schools, community colleges, and industry, MCEF utilizes the NCCER curriculum which is a nationally-recognized, competency-based, standardized training curriculum offering permanent credentials for a skilled workforce.

There is a definite career path in construction – which can be linear and progressive – for individuals who complete training and earn credentials. There is also unlimited potential for those who start at the bottom and continue employment, working their way up. Learn about the options for careers in this section.



[www.mcef.net](http://www.mcef.net)

# START YOUR CAREER WITH MDOT



The Mississippi Department of Transportation is responsible for providing a safe intermodal network that is planned, designed, constructed, and maintained in an effective, cost-efficient, and environmentally sensitive manner.

MDOT has many career opportunities to allow you to grow professionally within the agency and make a difference in the Mississippi transportation network.

MDOT is always looking for talented individuals across a broad range of career paths. MDOT is an equal-opportunity employer that fosters a diverse and family-friendly workforce. Become one of our committed employees dedicated to building the safest and most efficient transportation network.



[mdot.ms.gov](http://mdot.ms.gov)

# NUCOR®

## Be Apart of Something Bigger

We are a team forged around a vision for leading our industry by providing unparalleled customer care, building trusted partnerships, and creating sustained value.

North America's most diversified steel and steel products company. But we're also a team forged around a vision for leading our industry by providing unparalleled customer care, building trusted partnerships and creating sustained value.

With a firm commitment to our team members, and a variety of benefits and performance incentives, it's easy to see why Nucor is named one of America's best employers.



[nucor.com](http://nucor.com)





## A box isn't just a box. Your corrugated packaging impacts your entire operation.

### **People and Customers First**

The cornerstone of our business is the strong relationship between our customers and our people. That relationship helps us understand your goals and objectives, and ensures we build the best packaging solution for your business.

### **Reliable Containerboard Supply**

Packaging Corporation of America is an integrated company that manufactures containerboard at our seven mills. This ensures an uninterrupted supply of paper at our 90+ box plants in the U.S.

### **Local and National Footprint**

Get all the personalization and on-the-ground support from your local team while also gaining nationwide economies of scale and broad expertise. We're big and small in all the best ways.

### **Decades of Experience**

Our company roots date back to 1867. Through the years, our customer-centric focus on delivering world-class corrugated packaging solutions where and when they are needed has remained constant.

We've built an entrepreneurial company filled with highly engaged and results-driven teams.



[packagingcorp.com](http://packagingcorp.com)



The mission of the City of Pearl Fire Department is to provide all occupants of the city, a well maintained, trained, and equipped fire control force to provide fire suppression, fire prevention and emergency rescue activities in an effort to reduce the loss of life and property.

The City of Pearl Fire Department currently utilizes four fire stations, which are fully operational 24 hours a day, 365 days a year.





Established in 1950, Revell is now a seven store chain operating in central Mississippi with locations in South Jackson, Pearl, Clinton, Byram, Florence, Brandon at the Reservoir and North East Jackson.

We are your local hardware store and we are a part of your community. Ace Hardware has over 5,000 stores around the world with the majority of those stores independently owned and operated by local entrepreneurs. These hard-working men and women are part of the fabric of your community. They are small business owners who are local and loyal...just like it ought to be. While others have become large and impersonal, at Ace, we've remained small and very personal. That's why we say a visit to Ace, is like a visit to your neighbor.

Ace Hardware Distribution Centers are where team players collaborate to support amazing retailers be the most helpful hardware stores on the planet. Hear from our employees about career opportunities at Ace's 15 Distribution Centers around the country.



[careers.acehardware.com](https://careers.acehardware.com)

# StationServ

*Fueling tomorrow's solutions, today.*

StationServ fuels tomorrow's solutions, today. As a leading provider of petroleum equipment sales, service, compliance, testing and construction, StationServ delivers cutting-edge solutions across the full life cycle of fuel providers' needs. StationServ is the employer of choice for technicians and fuel industry professionals and the partner of choice for our customers, driving their growth and success by providing innovative solutions in products, services, testing, compliance and construction.

High professional standards and first-class team members drive the culture and success of StationServ's companies. Together, those companies are exponentially stronger—a robust network of fuel industry brands offering opportunities for company and career growth. Join us and take your talents to the next level.



**[stationserv.com](https://www.stationserv.com)**



## **An Experienced Choice For Quality Pavement Maintenance In MS, LA, TN & AL**

Sunbelt Sealing, Inc. is a leader in the pavement maintenance industry. We have gained the experience and the know-how to fulfill any request with quality paving services. Trust us to revitalize the look of your pavement!

In addition to our experience and knowledge, there are many other reasons why we stand apart from the competition. We employ a professionally trained crew and utilize state-of-the-art equipment! We also use only the best materials and proven techniques to make your parking lot or driveway safe and good-looking.



[sunbeltsealing.com](http://sunbeltsealing.com)



TempStaff is an independent, locally owned and operated, full-service staffing company in Mississippi. The greatest benefit to our being locally owned and operated is that the buck stops—and starts—here. We don't answer to some remote home office. We make our own decisions and work directly with our clients.



Our company philosophy is “A Personal Touch to Employment Staffing.” Our team is dedicated to providing quality customer service and exceeding your expectations. Our goal is to help our clients create and implement staffing strategies that maximize the value of their regular and temporary workforce. We help them find and hire the best employees and achieve their human resource objectives.



By assisting individuals in their search for meaningful, satisfying employment, we significantly contribute to the business community we serve by employing more than 4,000 people annually. Our pride in our reputation is what drives us. If you're ready to get on board, [contact us today!](https://tempstaff.net)

[tempstaff.net](https://tempstaff.net)



## United Assoc. of Plumbers and Pipefitters

The United Association of Journeymen and Apprentices of the Plumbing and Pipefitting Industry of the United States and Canada (UA) represents approximately 373,000 Plumbers, Pipefitters, Sprinkler Fitters, HVACR Service Technicians, Welders and Pipeliners working in the construction industry throughout North America.

Once you become a UA member there are many career paths you can choose. Starting as an apprentice, the UA provides many training opportunities to grow and develop into a highly skilled journey-level worker. Our training programs provide you with the certifications and credentials you will need to succeed. You decide how far you will go: become a designer, contractor, business owner, or foreman, or go big and help the next generation of trade workers and become an instructor, organizer, or UA official. You choose your path.

[ua.org](http://ua.org)

# United Way



WE MAKE LIFE BETTER FOR  
MORE THAN 48 MILLION  
PEOPLE A YEAR.



United Way mobilizes communities around the world to close gaps and open opportunities so everyone can thrive. Through our global network spanning 37 countries and 1,100 communities, United Way connects partners, donors, volunteers, and community leaders to tackle the root causes of the world's most complex challenges while making a positive impact in the lives of millions of people.

[unitedway.org](https://unitedway.org)



HEALTH



EDUCATION



ECONOMIC MOBILITY

THANK YOU FOR SUPPORTING  
READY 2 WORK!